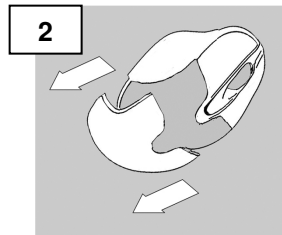
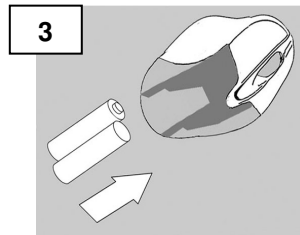


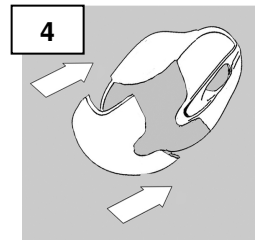
Firmly press and slide the top of the mouse to open the battery compartment



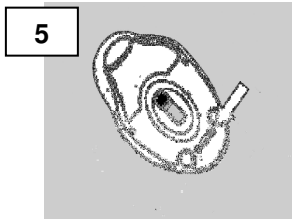
Slide the top cover backwards



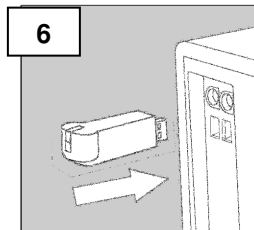
Correctly insert the batteries



Slide the top cover back on the mouse



Make sure the mouse is turned "on"



Turn on your PC and connect the RF receiver to an available USB Port. Your mouse should now function properly.

IF YOUR MOUSE DOES NOT WORK AUTOMATICALLY:
Press the connect button on the receiver

Then, press the connect button underneath the mouse

A diagram showing a USB receiver plugged into a PC's USB port. An arrow points from the receiver to the port. To the right is a top-down view of the mouse with a small button on the bottom right side.

For technical assistance visit www.microinv.com or call toll free: 1-877-550-5534.
Technical Support hours of operation: Monday - Friday 8:30am to 7:00pm E.S.T.